



QUICK START GUIDE
GUIDE DE DÉMARRAGE RAPIDE



GUÍA DE INICIO RÁPIDO
SCHNELLSTARTANLEITUNG



快速入门指南
빠른 시작 가이드



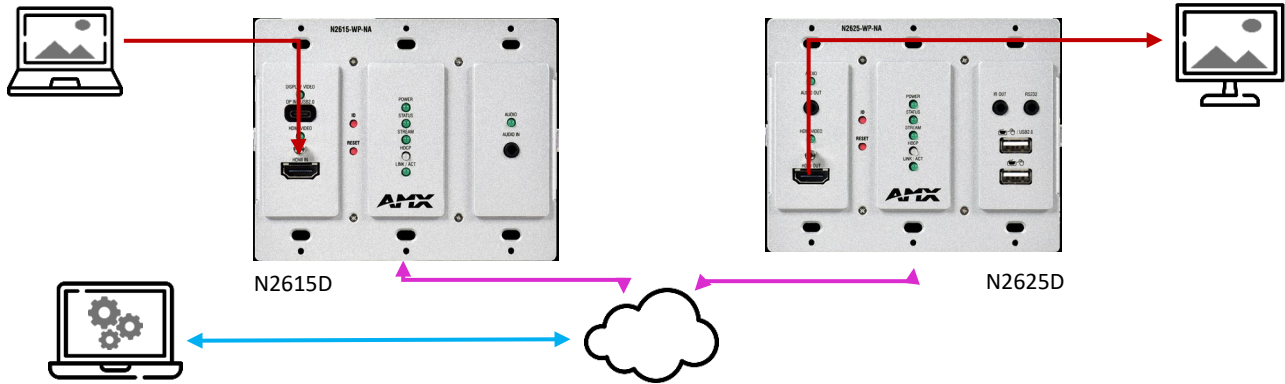
HDMI

Power over Ethernet (POE)

Alimentation par Ethernet
Alimentación a través de Ethernet
Strom über Ethernet
以太网供电
PoE (Power over Ethernet)

Network

Réseau
Red
Netzwerk
网络
회로망

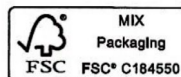
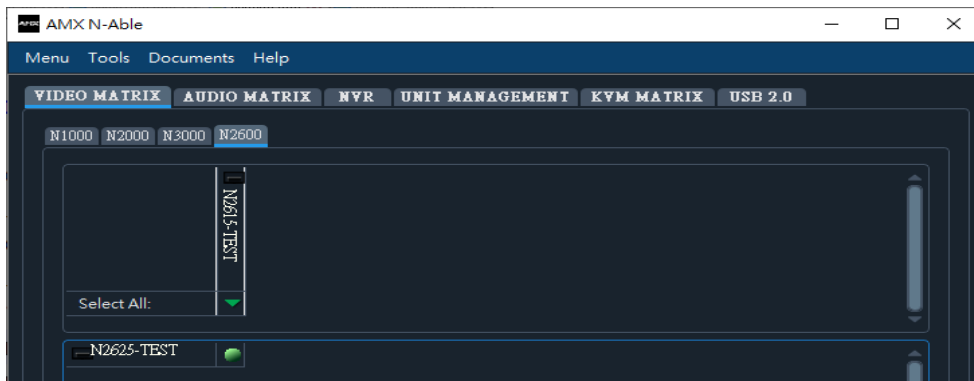


Download
Télécharger
Descargar
Herunterladen
下载
다운로드

URL / 网址
https://www.amx.com/product_families/n-able-control-software



AMX N-ABLE



© 2024 Harman. All rights reserved. SmartScale, NetLinX, Enova, AMX, AV FOR AN IT WORLD, and HARMAN, and their respective logos are registered trademarks of HARMAN. Oracle, Java and any other company or brand name referenced may be trademarks/registered trademarks of their respective companies.

AMX does not assume responsibility for errors or omissions. AMX also reserves the right to alter specifications without prior notice at any time. The AMX Warranty and Return Policy and related documents can be viewed/downloaded at www.amx.com.

3000 RESEARCH DRIVE, RICHARDSON, TX 75082 | AMX.com | 800.222.0193 | 469.624.8000

amx.com/support

amx.com/warranty



Last Revised: 2024-6-12